

PLUS POOLS & SPAS New Homes

FIRST-HOMEBUYERS SHOULD ACT NOW. P20
SOUTH WEST HOUSING AWARDS WINNERS. P22-32



WHITE HAVEN

New Santorini offers unforgettable
experience. P38-39

This stylish and luxurious home has been designed to give the owners the feeling of living in a holiday resort on a Greek island. **Ingrid Waltham** reports.



The pool, with its criss-crossing fountain sprays, has rich blue LED lights.

Pictures: Joel Barbitta

Here, Greece is the word

If you have ever spent time on any of Greece's famous islands, the name of Santorini may evoke images of whitewashed walls, azure seas, brilliant clear light and easy, relaxed living. Now there is a Santorini in Swanbourne; part of the Bespoke Collection from Exclusive Residence. Of the three distinctly themed homes in the collection — Atlanta, Siam and Santorini — the latter two are now open. Like a holiday on a Greek island, the Santorini offers an

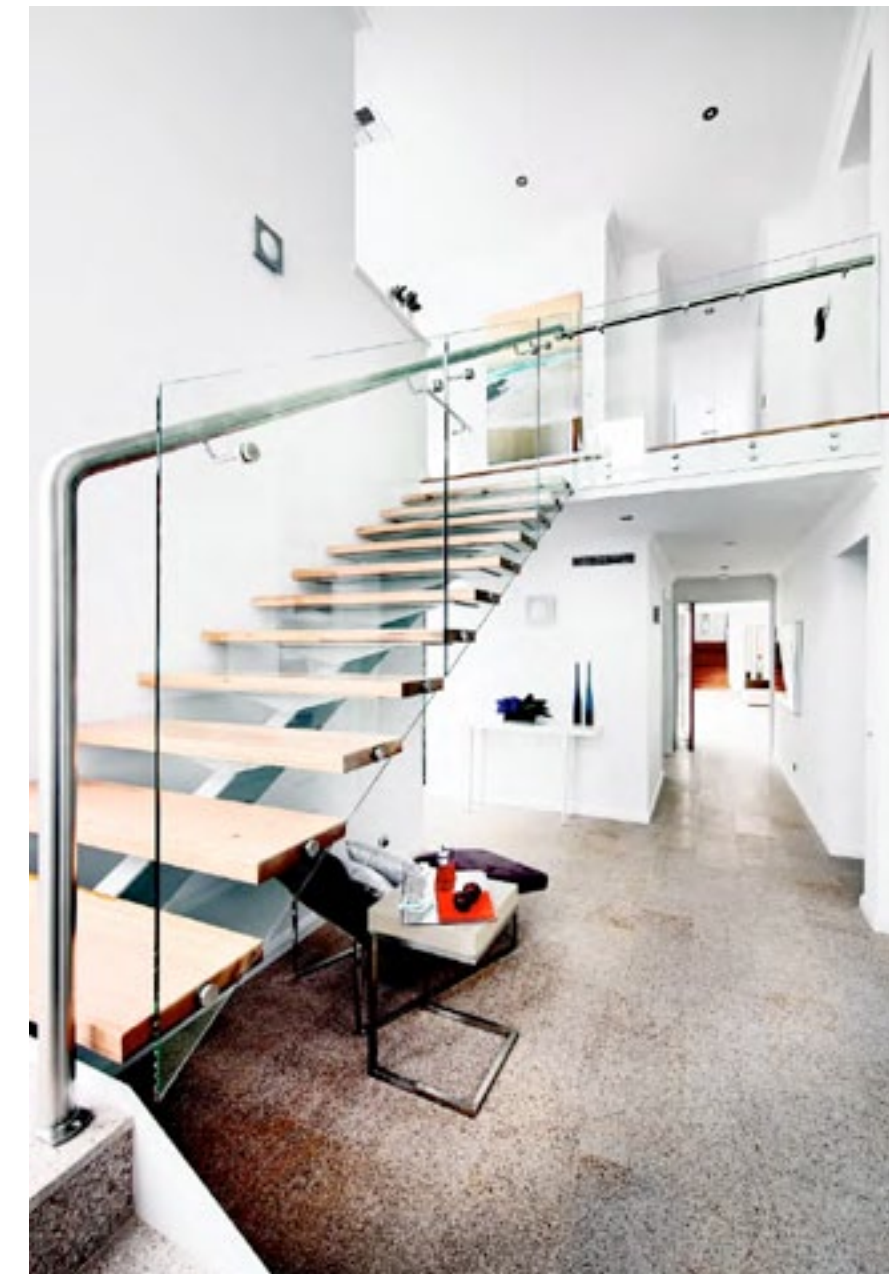
unforgettable experience. Built across multi-levels — recalling the hillside terraced homes of Greece — it is designed to provide outlooks from every angle, whether of the central courtyard and water feature, or the sparkling pool and simply but artistically landscaped Mediterranean garden at the back. Luxury, quality and attention to detail are evident at every turn. Ceilings are at least 32-34 courses, with shadowline cornicing, deep coffers and trough lighting. Every stone floor tiled is heated for

comfort underfoot. Wall display niches are finished in imported ceramic tiles, and all finishes are high spec, right down to the two-coat lacquer cabinets, tapware and custom-made drainage in the bathrooms. A soaring white, light-filled void has been turned into a dramatic library, with shelving reaching all the way up the 4.5m wall (there's a hidden ladder if the book required is on the top shelf). A suspended staircase in blackbutt and glass keeps the void open and light.

The first of the four bedrooms and bathrooms is downstairs. It is a private retreat with a cloakroom, a big bedroom and ensuite. Double doors open to a big home office with sliding doors to the central courtyard, and a view of the water feature and fountain. A 2m-wide glazed pivot door leads to the modern, all-white kitchen, dining and living areas. The kitchen is clean and minimalist, with stainless-steel appliances, a glass splashback, integrated dishwasher, soft-closing drawers and pull-out pantry.

Full-length windows fill the living areas with light. Bi-fold doors at the back open out to a poolside barbecue terrace and built-in kitchen with stone benchtops and a wood-fired pizza oven. The brilliant blue mosaic-tiled pool, with its criss-crossing fountain sprays, has rich blue LED lights for a stunning effect at night. Internal entrance from the garage is on its own level, along with the laundry and drying courtyard.

Upstairs are the family bedrooms. The two children's rooms have study areas and robes, and share a big bathroom. For the main suite, think a luxurious Mediterranean resort apartment. The sloping skillion roof hits 46 courses at its highest, and along with a huge bedroom, a fully integrated walk-in robe-dressing room and an ensuite with a bath and double-headed shower, is a spacious balcony with pool and garden views. The Santorini is open for display for a limited time.



The Santorini evokes images of whitewashed walls, azure seas, brilliant clear light and easy, relaxed living.