

Barnard House / Daniel Lomma Design


[Save](#)

BUILDING OF THE YEAR 2024 sponsored by DORN BRACHT VOTE HERE >>>



Curated by Paula Pintos

HOUSES, HOUSES INTERIORS, SUSTAINABILITY - ALFRED COVE, AUSTRALIA

Architects: Daniel Lomma Design

Area: 402 m²

Year: 2018

Photographs: Silvertone Photography

Manufacturers: DECO Australia, GRAPHISOFT, Hansgrohe, Miele, Brikmakers, Caesarstone, Danmar Doors, Decowood, Downtown, Faze, Parisi, Polytec, Travel South Gold, Villeroy & Boch, Zaza Aluminium

Lead Architects: Daniel Lomma

Engineering: Mike Lalli & Associates

Landscape: Mondo Landscapes

Products used in this Project



DECO Australia
Architectural
Battens-...

MORE SPECS



Text description provided by the architects. Situated in a leafy Perth suburb of Western Australia, Barnard is a family home with room for each member of the family to have their own space.

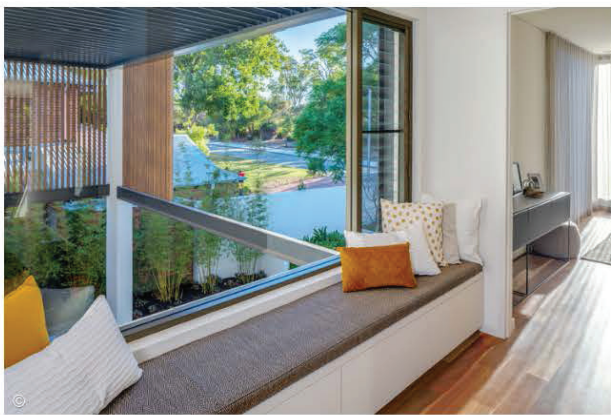


Features include a home office with separate access, an outdoor bathroom, activity room with access to outside, large alfresco which extends the indoor dining area, maximising outlook to nature reserve across the road. Being a corner block, both street aspects are striking in appearance. It's both an energy efficient home and a home that adapts with a growing family.

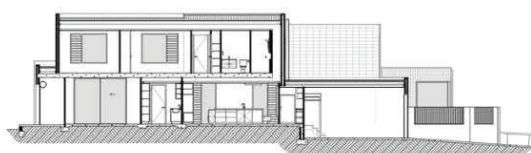
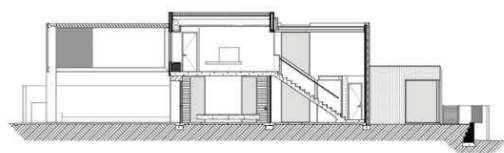


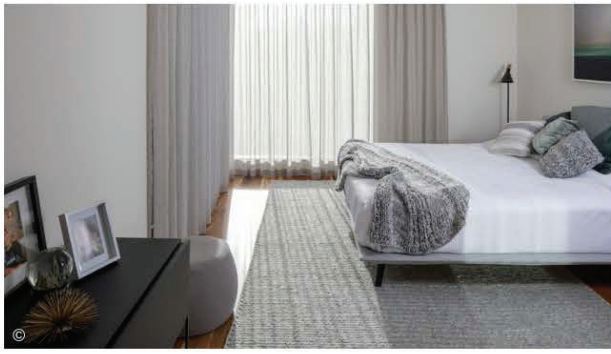


The open plan living encourages the pool to be the focal point, with the palette complimenting the nature reserve across the road. The home office can also function as a future guest or master bedroom. The home ensures that each room has the best possible outlook from every window, which in turn provides natural ventilation, in particular to the bedrooms. The light filled home is a modern flat roof design with timber look battens and a timeless design.



The outdoor powder room allows for ease of access from pool area, whilst the activity room boasts a large sliding door directly accessing alfresco. The alfresco runs through to the indoor dining area with glass bifold doors, and the main living rooms and bedrooms have outlook to nature reserve across the road. Louvre windows help create a comfortable home capturing the cool afternoon breeze and north facing living areas allowing the winter sun to warm the home. Multi purpose rooms to adapt from home office to guest bedroom with adjoining bathroom, activity room can double as a guest bedroom or gym, kitchen has plenty of storage with overhead and under bench cupboards, walk in pantry, hidden drawers maximising space, large bench tops, and appliance cupboard.

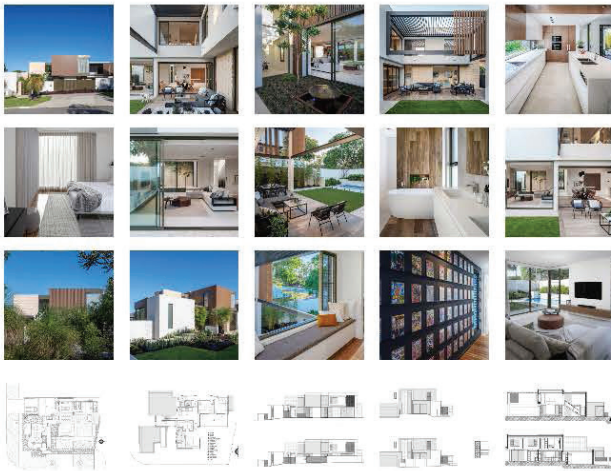




All windows with views have been utilised and where the natural view was lacking, ponds and landscaping have created a harmonious and complementary view. Three upstairs bedrooms have Louvre windows and ceiling fans to minimise the need for air-conditioning. Privacy to the backyard has been achieved through the clever use of angled slat fencing which provides the required open aspect according to council regulations at the same time providing privacy to the pool and outdoor living areas. Timber-look powder coated aluminium battens were sourced to achieve the low maintenance brief as well as a talking point for the home. The earthy colour palette both blends and complements the natural surroundings.



Project gallery



About this office



Daniel Lomma Design
Office

[FOLLOW](#)